



3-WAY AIR-PILOTED & LIMIT VALVES



3-WAY AIR-PILOTED VALVES

Three-way valves are 2-way valves with the added function of exhausting the outlet when the valve is closed. When an air signal is applied to the pilot of a normally closed (NC) valve the inlet is open to the outlet and the exhaust is blocked; removing the pilot closes the inlet and the outlet is open to the exhaust port which vents to atmosphere. When an air signal is applied to the pilot of a normally open (NO) valve the inlet is blocked and the outlet is vented; removing the pilot signal opens the inlet to the outlet and blocks the exhaust.

Medium: Air only

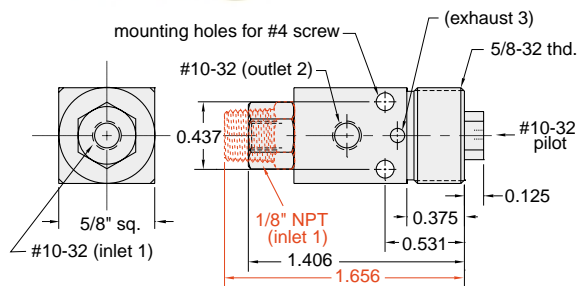
Materials: Brass body, Buna-N seals, stainless steel stem and spring

Mounting: 5/8-32 thread or #4 screw. Nut and lockwasher may be ordered separately. Part Number: PAV-MH

Air Pilot Pressure: 15 psig min.

Foot Bracket: FB-1791

Air-Piloted Normally-Closed Poppet Valves



Input Pressure: 300 psig max.

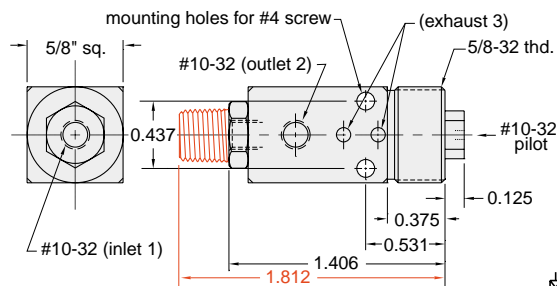
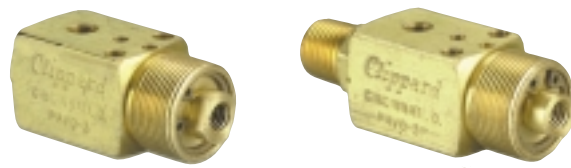
Air Flow: 4.0 SCFM @ 50 psig; 6.8 SCFM @ 100 psig

Part No. Description

PAV-3Normally-Closed Poppet Valve, #10-32

PAV-3PNormally-Closed Poppet Valve, 1/8" NPT

Air-Piloted Normally-Open Poppet Valves



Input Pressure: 150 psig max.

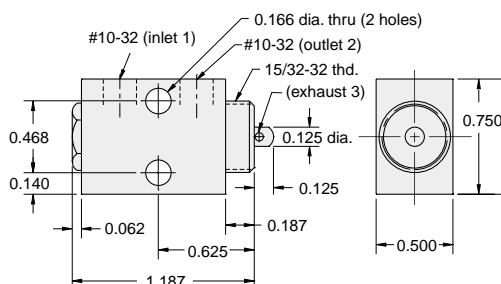
Air Flow: 6.8 SCFM @ 50 psig; 11.6 SCFM @ 100 psig

Part No. Description

PAVO-3Normally-Open Poppet Valve, #10-32

PAVO-3PNormally-Open Poppet Valve, 1/8" NPT

Miniature Limit Valve



Stem Travel: 1/8"

Input Pressure: 150 psig max.

Air Flow: 4 SCFM @ 50 psig; 7 SCFM @ 100 psig

Force for Full Stem Travel: 48 oz. nominal

Mounting: Dual #20 holes or 15/32-32 thd. Nut and lockwasher furnished

Part No. Description

MLV-3Normally-Closed Miniature Limit Valve